

LALPA BOARD REPORT

September 24, 2020

4:30 pm

Nereida Lopez, Principal



ENROLLMENT

Enrollment: 341 students

TK/Kinder= 48

1st Grade= 52

2nd Grade= 48

3rd Grade= 62

4th Grade= 52

5th Grade= 61

ETK= 18



ATTENDANCE

a. Per CDE guidelines, average daily participation and engagement: **94.05%** - students who log in at least one session per day and/or complete asynchronous assignments

c. English Learners Attendance: TK-5TH GRADE: AUGUST 17-SEPTEMBER 24th=**94.6%** Daily participation and engagement

Grade Level	ADA	ADA %
-1	2.96	98.61%
0	43.79	90.14%
SubTotal	46.75	90.63%
1	49	93.11%
2	45.21	93.45%
3	57.67	94.47%
SubTotal	151.88	93.73%
4	50.04	96.23%
5	59.17	95.95%
SubTotal	109.21	96.08%
Grand Total	307.83	94.05%

Los Angeles Leadership Primary Academy 14
Run Date/Time: 9/24/20 2:56 PM
08/17/2020 to 09/18/2020 = 24 days

Grade Level	Carry Fwd	Gain	Loss	Ending	Actual Days	OffTrack	Days N/E	Days Ineligible	Days Absent	Days Att'd	ADA	ADA %
-1	0	3	0	3	72	0	0	0	1.00	71.00	2.96	98.61%
0	0	49	2	47	1176	0	10	0	115.00	1051.00	43.79	90.14%
SubTotal	0	52	2	50	1248	0	10	0	116.00	1122.00	46.75	90.63%
1	0	53	1	52	1272	0	9	0	87.00	1176.00	49.00	93.11%
2	0	50	2	48	1200	0	39	0	76.00	1085.00	45.21	93.45%
3	0	62	1	61	1488	0	23	0	81.00	1384.00	57.67	94.47%
SubTotal	0	165	4	161	3960	0	71	0	244.00	3645.00	151.88	93.73%
4	0	52	0	52	1248	0	0	0	47.00	1201.00	50.04	96.23%
5	0	63	2	61	1512	0	32	0	60.00	1420.00	59.17	95.95%
SubTotal	0	115	2	113	2760	0	32	0	107.00	2621.00	109.21	96.08%
Grand Total	0	332	8	324	7968	0	113	0	467.00	7388.00	307.83	94.05%

Attendance

Average meeting attendance: 89%-
Attendance percentage is taken from the average of all core sessions (ELA, SLA, Math)

LALPA AVERAGE WEEKLY ATTENDANCE BY CLASS & GRADE LEVEL						
		69-below	70-79	80-89	90-94	Met target (95+)
Grade	Teacher	Aug. 17-20	Aug. 24- 28	Aug. 31-Sept. 4	Sept. 7-11	Sept. 14-18
ETK/TK	Manzano	97%	97%	96%	96.70%	95%
TK/K	Magallon	95%	92%	87%	92%	94%
K	Valencia	70%	76%	70%	73%	80%
ETK-K GRADE LEVEL AVG.		87%	88%	84%	87.00%	91%
1st	Arriaga	87%	90%	90%	91%	87%
1st	Gonzalez	89%	92%	96%	95%	96%
1st GRADE LEVEL AVG.		88%	91%	93%	93%	91%
2nd	Garcia	74%	78%	90%	91%	91%
2nd	Rodriguez	77%	87%	90%	93%	92%
2nd GRADE LEVEL AVG.		76%	83%	90%	92%	92%
3rd	Hernandez	92%	91%	93%	92%	91%
3rd	Lazcano	91%	96%	96%	95.00%	97%
3rd	Perez	68%	79%	88%	80%	85%
3rd GRADE LEVEL AVG.		84%	89%	92%	89.00%	91%
4th	Berganza	86%	91%	92%	93%	95%
4th	Harrison	85%	86%	90%	85%	93%
4th GRADE LEVEL AVG.		86%	89%	91%	89%	94%
5th	Betancourt	84%	91%	91%	89%	91%
5th	Castellanos	89%	86%	85%	86%	89%
5th	Eufragio	96%	95%	92%	89%	88%
5th GRADE LEVEL AVG.		90%	91%	89%	88%	89%
SCHOOL-WIDE AVERAGE		85%	89%	90%	90%	91%

Attendance Action Plan

Action Plan:

- Reassigned responsibilities to classified staff member to focus on attendance calls and tracking.
- Technology support hotline
- Principal and Student Support Teacher on campus daily

Incentives:

- incentives during zoom sessions

Communication

- online to parents (Class Dojo app)
- Coffee with the Principal
- Individual Calls
- Weekly updates to teachers; teachers creating their own plan to improve class attendance

ACADEMIC ACHIEVEMENT

- a. **STAR Reading Assessments- Fall Testing Window**
- i. **Grades TK-1st take the Early Literacy STAR (Eng. & Span.)**

STAR Early Literacy Assessment English			
	Students tested	Above 50th Percentile	Under 50th Percentile
Kinder	47	68%	32%
1st Grade	52	52%	48%

STAR Early Literacy Assessment Spanish			
	Students tested	Above 50th Percentile	Under 50th Percentile
Kinder	44	66%	34%
1st Grade	51	43%	57%

School
Los Angeles Leadership Primary Academy

Teacher	Star Early Literacy		Star Early Literacy Spanish	
	PR Proficiency - At/Above: 50	PR Proficiency - Below: 50	PR Proficiency - At/Above: 50	PR Proficiency - Below: 50
	2020 - 2021	2020 - 2021	2020 - 2021	2020 - 2021
Arriaga, Miguel	14	13	13	14
Gonzalez, Nohemi	13	12	9	15
Magallon, Adriana	14	6	12	8
Manzano, Laura	4	6	5	3
Valencia, Alexandrya	14	3	12	4
Summary	59	40	51	44

ACADEMIC ACHIEVEMENT

STAR PROCIENCY REPORT (aligned to CAASPP)

ii. Grades 2nd-5th take the STAR Reading

School
Los Angeles Leadership Primary Academy

Grade ▲	Less than Proficient				Proficient			
	Level 1		Level 2		Level 3		Level 4	
	Total	%	Total	%	Total	%	Total	%
Grade 2	22	50%	10	23%	3	7%	9	20%
Grade 3	29	49%	15	25%	10	17%	5	8%
Grade 4	31	60%	7	13%	7	13%	7	13%
Grade 5	37	60%	15	24%	9	15%	1	2%
Grade 6	-	-	-	-	-	-	-	-
All Students Summary	119	55%	47	22%	29	13%	22	10%

- **STUDENTS IN GRADES 2-5 ARE FAMILIAR WITH TEST FORMAT**
- **TESTED OVER 90% OF STUDENTS**
- **PARENTS WERE KEY FOR GRADES K-2ND**
- **WORKING PARENTS COULD NOT SUPPORT STUDENTS UNTIL LATE EVENING**
- **HOUSE VISITS WERE REQUIRED**
- **TESTING TK AND KINDER STUDENTS WAS VERY CHALLENGING TO SUPPORT AND SUPERVISE THE TEST**

Successes and Challenges of remote testing

English Learner: ELPAC & Reclassification

- Spring 2020 ELPAC Partially completed
 - As per CDE guidance, currently testing onsite (select students only)
- Initial Assessments:
 - 45 day extension (Senate Bill 820)
- To date: 13 reclassifications for 19-20 school year

Professional Development

- a. PBIS Training Year 1:** Principal, Student Support Teacher, Art Teacher, Learning Center Teacher, 3 Classroom Teachers, Parent Coordinator
- b. Learning While Leading Professional Development:** Instructional team of 5 teachers and administrator to review English Learner Achievement and create plan of improvement
- c. Bureau of Educational Research-** Google Classroom & Online Tools
- d. Simple K-12-** Platform to individualize webinar trainings

Parent Engagement

- a. "Chat with the Parent Coordinator"
- b. Teacher-created tutorials for parents
- c. Teachers conference with parents after hours

LOS ANGELES LEADERSHIP ACADEMY




CHAT WITH THE PARENT COORDINATOR
WEDNESDAY, SEPTEMBER 16
4:30PM

JOIN OUR PARENT COORDINATOR TO HAVE THE OPPORTUNITY TO VOICE YOUR CONCERNS, SUGGESTIONS, HELPFUL TIPS, REQUEST/PROVIDE RESOURCE INFORMATION OR QUESTIONS THAT MAY BE ADDRESSED BY OUR PRINCIPALS DURING COFFEE WITH THE PRINCIPAL.

VIA ZOOM
MEETING ID: 873 7787 2580
PASSCODE: CHAT

 **Mrs. Gonzalez**
Mrs. Gonzalez - 1st Grade Sep 12



SATURDAY, SEPTEMBER 12
TUTORIAL: How to NAVIGATE GOOGLE CLASSROOM
All day

 This event has already occurred

<https://www.loom.com/share/7949466453f04b4dbd042a2860a950ed>

 27 views

 **Ms. Garcia**
Mrs. Garcia's 2nd Grade Class Sep 1



WEDNESDAY, SEPTEMBER 2
Teacher-Parent Meeting
All day

 This event has already occurred

Hello Families,
I would like to have a meeting in regards to some concerns and expectations for my class (a little Q&A). Please join me tomorrow at 8:00am to 8:30am or at 6:00pm-6:30pm. I will see you tomorrow.

EVENTS, CELEBRATIONS, SCHOOL CULTURE

Great Public Schools
Now Grant- \$25,000

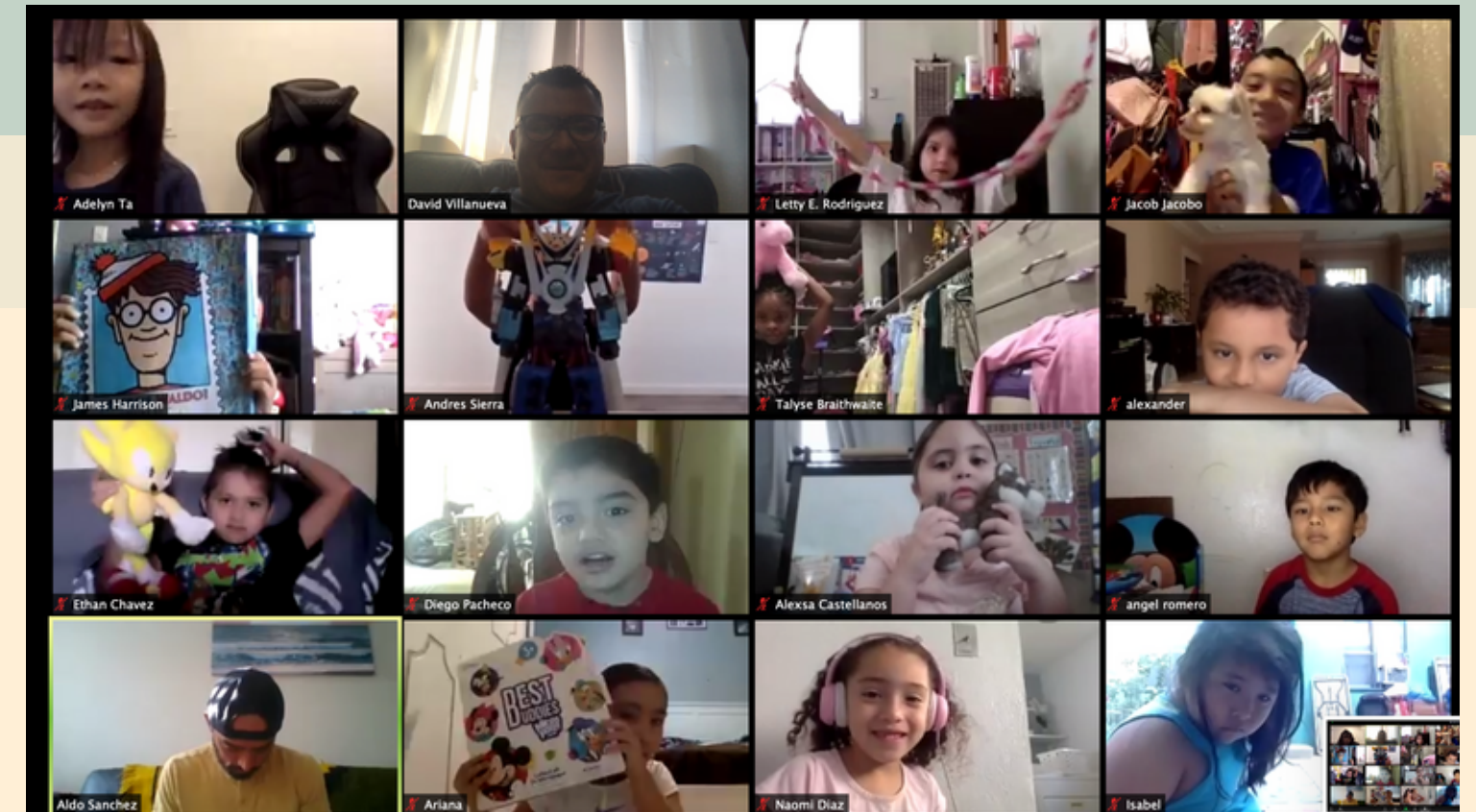


Social-Emotional
Learning in P.E. Class

Back-to-School Orientations 1st Week of School

 **Mrs. Harrison**
Mrs. Harrison's 4th Grade Aug 18

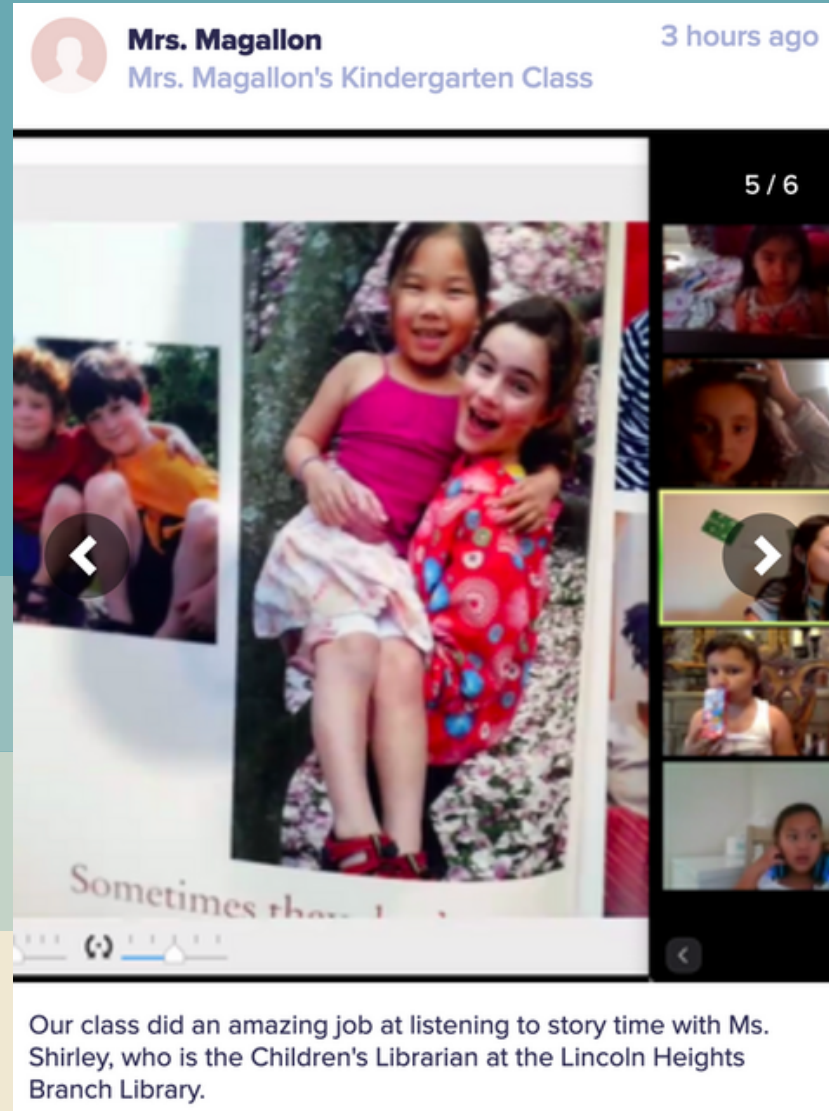
WEDNESDAY, AUGUST 19
4th Grade Back to School Evening Session
6:00 PM - 7:00 PM



EVENTS, CELEBRATIONS, SCHOOL CULTURE



Perfect Attendance Rewards



Volunteer Reading Program & Lincoln Heights Public Library Partnership

COVID-19 ANTI-BODY TEST

A family study about Covid-19 - sometimes called "coronavirus."

The Covid-19 antibody test tells us if you've been infected with Covid-19 in the past.

Our goal: learn how many of our children and families were infected.

- Cost: FREE
- Noninvasive
- Takes 10 minutes
- Confidential
- Results in 5-7 business days

Who can get tested?

ALL children in household and ONE adult

When?
TBD

Where?
Los Angeles Leadership Academy

How?

In partnership with USC and Los Angeles County Department of Public Health

COVID-19 Antibody Testing