

Board Report

DECEMBER 2020

Enrollment

Attendance

Student Achievement Data/ Benchmarks

Parent Engagement

Curriculum & Instruction

Professional Development

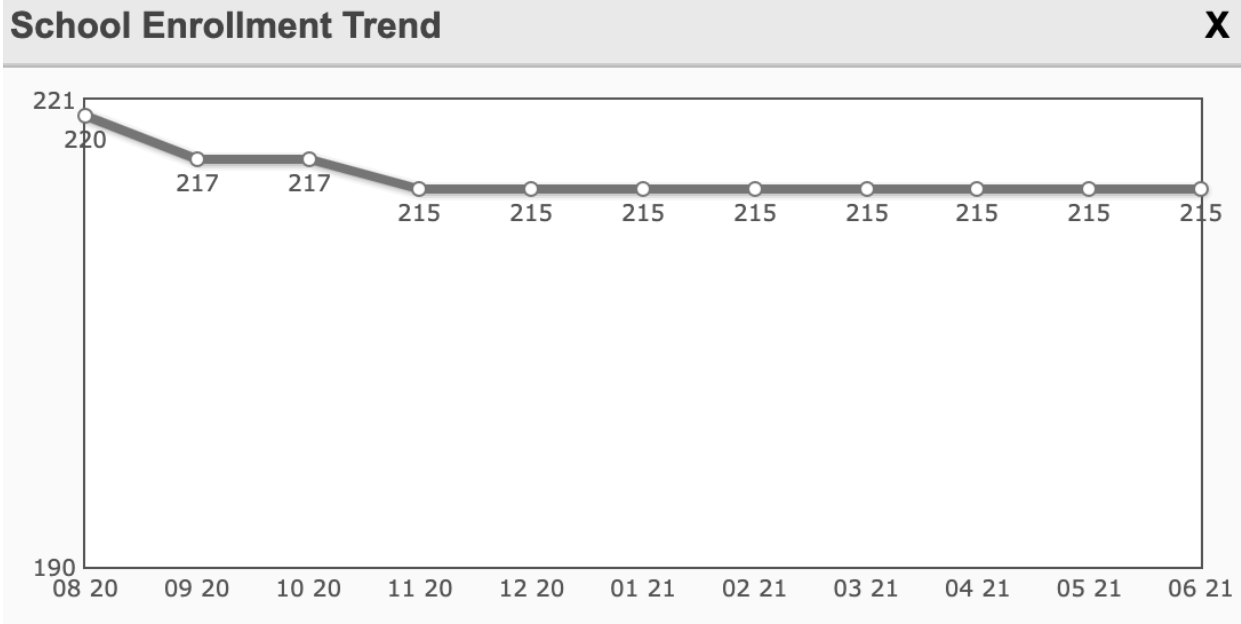
College and Career Readiness

Distance Learning Update

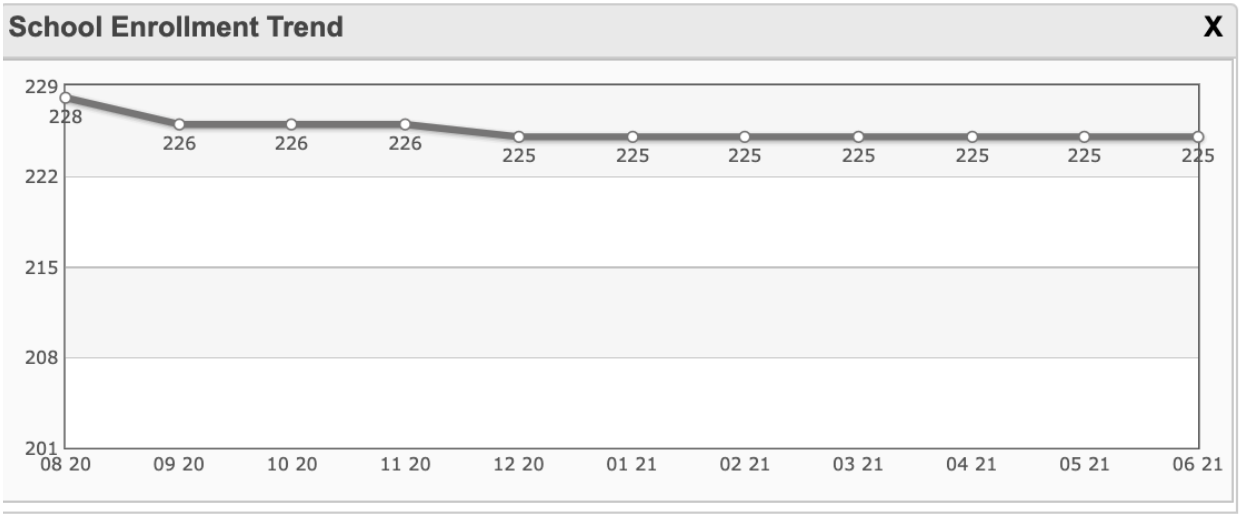


enrollment

Middle School



High School



attendance, engagement, and participation

A school day can be met through in-person instruction, distance learning, or a combination of in-person instruction and distance learning.

- For FY 2020–21 a minimum day of instruction is as follows: 240 instructional minutes in grades 4 to 12, inclusive.
- Students are provided daily Synchronous and Asynchronous instructional opportunities

Los Angeles Leadership Academy Middle School 08/17/2020 to 11/27/2020 = 66 school days

Grade Level	Carry Fwd	Gain	Mult Gain	Loss	Ending	Actual Days	OffTrack	Days N/E	Days Absent	Days Attd	ADA	ADA %
6	0	53	0	2	51	3498	0	93	60.00	3345.00	50.68	98.24%
Subtotal	0	53	0	2	51	3498	0	93	60.00	3345.00	50.68	98.24%
7	0	82	0	2	80	5412	0	95	143.00	5174.00	78.39	97.31%
8	0	86	0	2	84	5676	0	118	152.00	5406.00	81.91	97.27%
Subtotal	0	168	0	4	164	11088	0	213	295.00	10580.00	160.30	97.29%
Grand Total	0	221	0	6	215	14586	0	306	355.00	13925.00	210.98	97.51%

Los Angeles Leadership Academy High School 08/17/2020 to 11/27/2020 = 66 school days

Grade Level	Carry Fwd	Gain	Mult Gain	Loss	Ending	Actual Days	OffTrack	Days N/E	Days Absent	Days Attd	ADA	ADA %
9	0	94	0	1	93	6204	0	101	275.00	5828.00	88.30	95.49%
10	0	67	0	3	64	4422	0	155	137.00	4130.00	62.58	96.79%
11	0	35	0	0	35	2310	0	0	106.00	2204.00	33.39	95.41%
12	0	34	0	1	33	2244	0	53	31.00	2160.00	32.73	98.59%
Subtotal	0	230	0	5	225	15180	0	309	549.00	14322.00	217.00	96.31%
Grand Total	0	230	0	5	225	15180	0	309	549.00	14322.00	217.00	96.31%

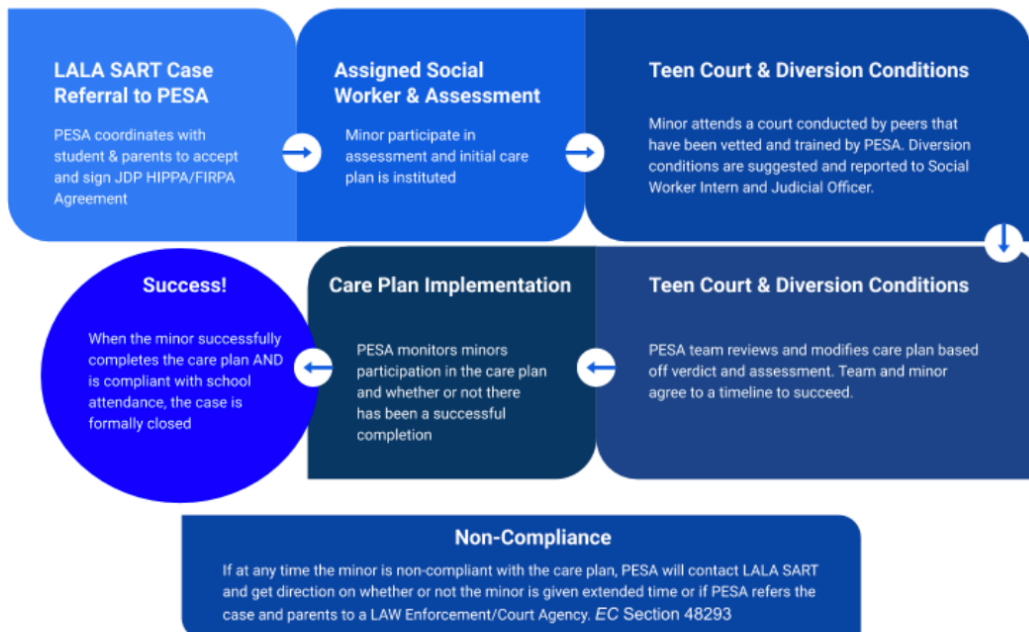
attendance outreach

SART On-Site Intervention Options

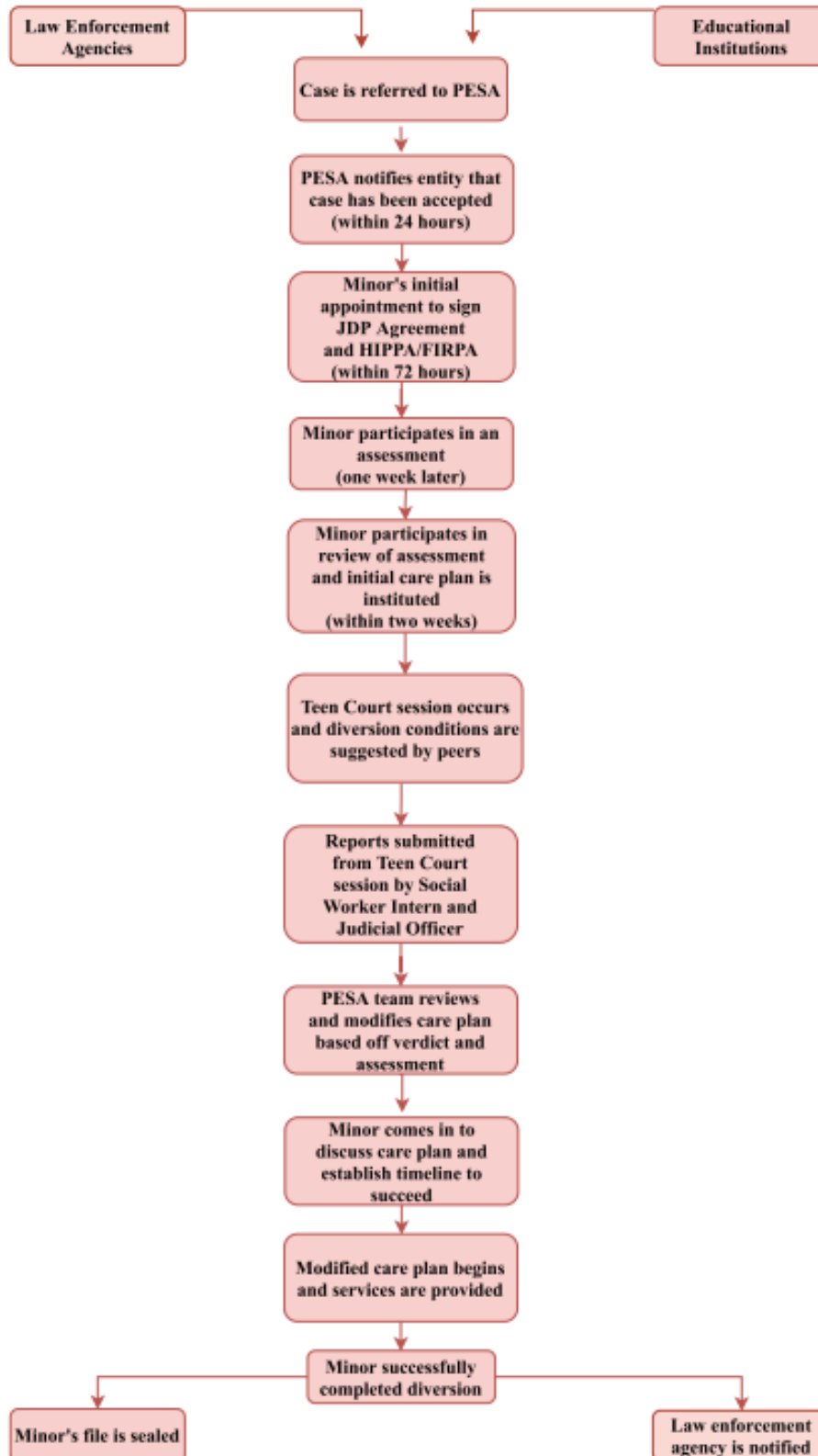


Non-Compliance can result in a referral to PESA/TEEN COURT

PESA/TEEN COURT



attendance outreach



student achievement data benchmarks

English Learner Reclassification

English Language Proficiency Assessments (ELPAC):

To support reclassification of students who were unable to complete testing in 2019–2020, the California Department of Education (CDE) extended an optional administration of the 2019–2020 Summative ELPAC for students who had met other criteria to potentially reclassify.

12 MS and 4 HS students had criteria indicating a high possibility of reclassification. They were tested this past October. 5 of the middle school students have qualified to Reclassify as Fluent English Proficient (RFEP)

Progress towards proficiency in math and English state standards

INTERIM CAASPP ASSESSMENT Data

ENGLISH AND MATH ICA DATA FOR GRADES 6-12 IS INCLUDED AS A SEPARATE DOCUMENT

parent engagement

Parents Reached through ParentSquare

OVERALL SNAPSHOT Show History

556

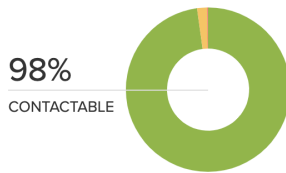
STUDENTS →

86

STAFF & TEACHERS →

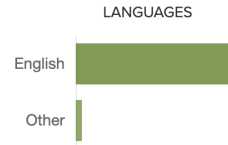
763

PARENTS →



556 STUDENTS' FAMILIES →

- CONTACTABLE 544 →
 At least one student contact is contactable
- NON-CONTACTABLE 11 →
 No student contact is contactable
- NO CONTACT INFO 1 →
 There are no student contacts listed



Opportunities for Parent Participation:

- DELAC
- SSC
- Coffee with the Principal - monthly
- Task Forces: Instruction, Safe Kids/ PBIS, Safety
- High Achiever/Gifted Parent Meeting
- HS/MS Edgenuity & College Courses Parent Workshop
- 6-12 Parent Conferences
- High School graduation requirement grades 9/10, 11, 12
- Onboarding parents to schoology
- WASC Forums

curriculum & instruction

Resources integrated with Schoology

Stemscopes Science Curriculum (HS)
Google Apps
Brainpop (MS & HS)
NewsELA Interdisciplinary Reading Comprehension (MS & HS)
TCI Social Science Curriculum (MS)
Kami PDF editing (MS & HS)
Acellus Remediation and Acceleration (MS & HS)
ALEKS Math Intervention (MS & HS)
Achieve 300 Reading Intervention (MS)
Edgenuity Language Courses (8th grade-HS)
Soundtrap Digital Audio Workstation (MS)

Curriculum & Resources

Inspire Science - McGraw Hill (MS)
Integrated Math - McGraw Hill (MS & HS)
Connect Ed Study Sync - McGraw Hill
ERWC - Grade 12 English curriculum from CSU
DuoLingo - English language app
No Red Ink - Grammar intervention

professional development

- Harvard Professional Education Certificates (HS)
- PowerSchool University (HS)
- LACOE Professional Development (MS & HS)
 - Virtual learning
 - English
 - Math
 - Science
 - Physical Education
 - Special Ed Support
 - Leadership
- Interim Assessment Hand Scoring Workshops (MS & HS)
- Paraeducator Trainings: Virtual Support and ELL Support (MS)
- Simple K-12 Professional Development (accessible and differentiated pd access)
- Circle Ways: Restorative Justice (MS & HS)
- Ensemble Learning: English Language Learners (MS & HS)
- Performance Matters (admin & lead teachers 6-12)
- Schoology Webinar (MS & HS)
- WASC PD and forums

college & career readiness

Class of 2020 - 58 students

Common App - 16% of Class of 2020 admitted to a private or out of state school (9/58)

- 22% of LALA seniors applied to at least one Common App School (13/58)
- 69% of LALA applicants admitted to at least one Common App School (9/13)
- 16 total acceptances and 3 wait listed
- 11% of the LALA students admitted to a Common App School, accepted admissions(1/9)

UCs - 22% of Class of 2020 admitted to a UC (13/58)

- 38% of LALA seniors applied to UCs (22/58)
- 59% of LALA applicants admitted to at least one UC (13/22)
- 19 total acceptances and 2 wait listed
- 62% of LALA students admitted to a UC, accepted admissions (8/13)

CSUs - 67% of Class of 2020 admitted to a CSU (39/58)

- 74% of LALA seniors applied to CSUs (43/58)
- 91% of LALA applicants admitted to at least one CSU (39/43)
- 86 total acceptances and 3 wait listed
- 56% of LALA students admitted to a CSU, accepted admissions (22/39)

Arizona State University - 36% of Class of 2020 admitted to a ASU (21/58)

- 38% of seniors applied (22/58)
- 95% of LALA applicants admitted (21/22)
- 0 LALA students admitted accepted admissions to ASU

Comm Coll - 12

Military - 3

college & career readiness

Class of 2021 - 45 students

- **College Wise** Counseling Support: C. Tsan, J. Martinez, J. Perez
- **Posse Finalists:** E. Jacobo (Kalamazoo), J. Diaz (Bucknell) (9 applicants, 4 semi-finalists, 2 finalists)
- **UC eligible:** 20/45 students
- **CSU eligible:** 37/45 students

High School - general

- 11 students dual enrolled through ELAC and Trade Tech
- Naviance College and Career Instruction implemented in advisory weekly
- Virtual Clippers Career Panel Assembly
- Virtual Career Fair through Think Together
- Virtual College Presentations by
 - UC San Diego
 - Azusa Pacific University
 - Los Angeles City College
 - Kalamazoo College
 - Los Angeles Trade Tech College

Middle School:

- Dual Enrollment through ELAC
- High School Language courses through Edgenuity
- C5 Youth Foundation of Southern California-Focuses on helping our youth learn about regional universities and colleges and how to apply for admission, financial aid, and scholarships.

distance learning

Middle School

Monday: Change section to Advisory Office Hour

Tuesday & Thursday: Advisory is Asynchronous and Elective class is composed of 30 minutes of Synchronous instruction and 30 minutes of Asynchronous instruction

LALA's Roaring News: Our MS Student Council has created our very own YouTube LALA's Roaring News. It is showcased during Advisory class informing students about important information and upcoming events.

MS PBIS: Middle School purchased LiveSchool, a school-wide online program that is used for track behavior data and is also a rewards system. Students receive weekly paychecks to show their earnings, graphs and charts of progress, and even the specific behaviors and comments recorded by all teachers.

MS PBIS: Middle School purchased LiveSchool, a school-wide online program that is used for track behavior data and is also a rewards system. Students receive weekly paychecks to show their earnings, graphs and charts of progress, and even the specific behaviors and comments recorded by all teachers.

Tutoring: Certificated Teachers provide after school and Saturday School for remediation

High School

Monday - Thursday

- late morning start - Virtual Office Hours, AP labs, and intervention labs
- lunch
- 12:05 - 3:35 virtual / synchronous Classes
- one hour of asynchronous work daily
- after school tutoring

Asynchronous Fridays

- Students work independently
- Teachers accessible via phone and zoom

Events

Among Us Virtual Competition for students and staff

Attendance and Academic Recognition and Pizza Rewards

My Name, My Story Empathy / Activism Assemblies